

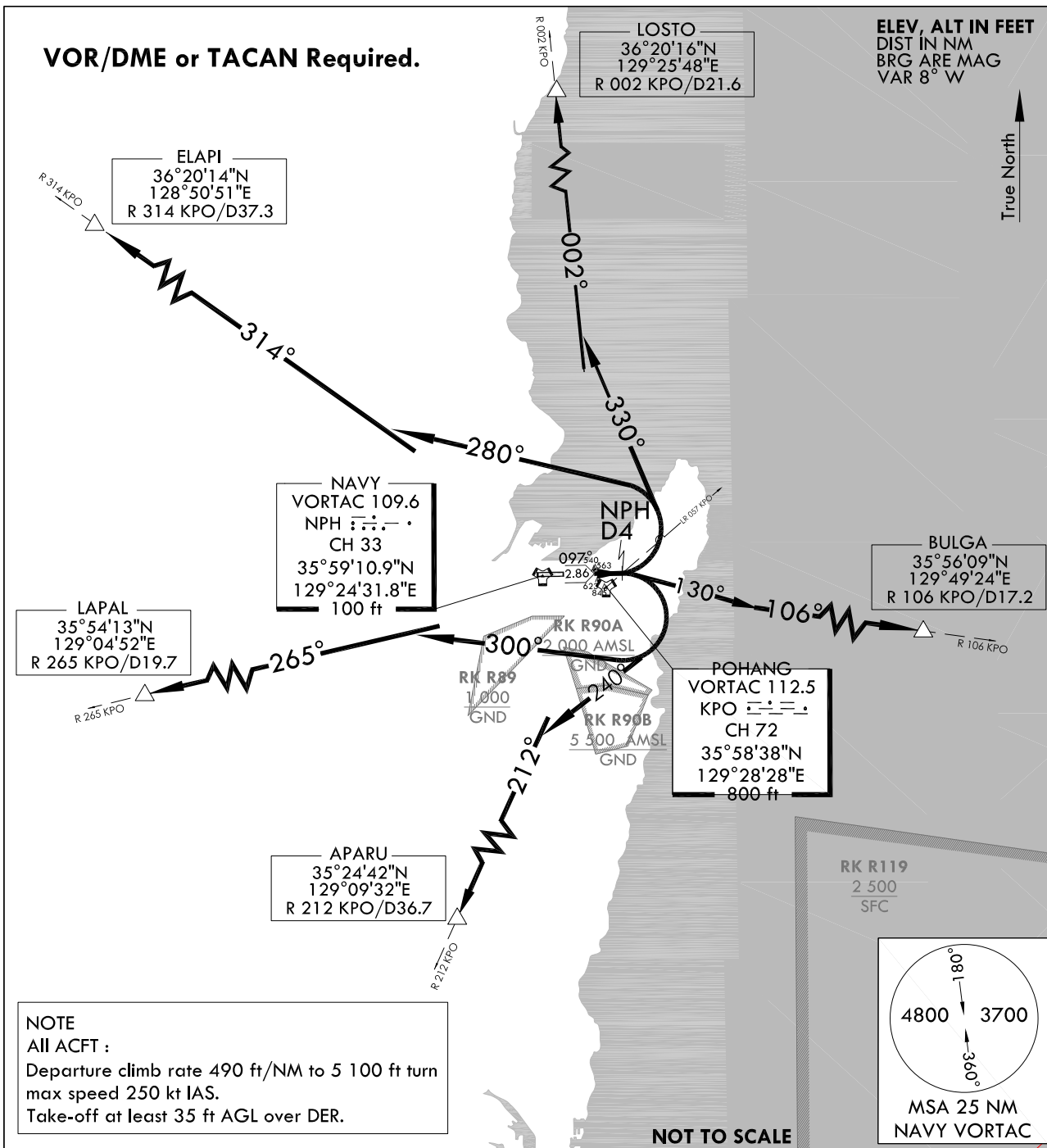
**STANDARD DEPARTURE  
CHART - INSTRUMENT(SID)**

TRANSITION	ALT	14 000
TRANSITION	LVL	FL 140

POHANG DEP	120.2	124.25
	232.4	
POHANG TWR	118.05	236.6
	308.5	

**POHANG/Pohang Gyeongju(RKTH)**  
**RWY 10**  
**POHANG 3**

Note : Departure under U.S. TERPS.



**NOTE**  
All ACFT :  
Departure climb rate 490 ft/NM to 5 100 ft turn  
max speed 250 kt IAS.  
Take-off at least 35 ft AGL over DER.

**DEPARTURE ROUTE DESCRIPTION**

**POHANG 3 DEPARTURE**

RWY 10 : Climb HDG 097° to NPH 4 DME or cross LR 057 KPO, then via assigned transition routes.

The following transitions are ATC assigned only : Fly to intercept for en route.

- ELAPI Transition** : .....left turn HDG 280° to intercept R 314 KPO and R 314 KPO to ELAPI.
- LOSTO Transition** : .....left turn HDG 330° to intercept R 002 KPO and R 002 KPO to LOSTO.
- BULGA Transition** : .....right turn HDG 130° to intercept R 106 KPO and R 106 KPO to BULGA.
- APARU Transition** : .....right turn HDG 240° to intercept R 212 KPO and R 212 KPO to APARU.
- LAPAL Transition** : .....right turn HDG 300° to intercept R 265 KPO and R 265 KPO to LAPAL.

Change : Information of aerodrome name(Pohang → Pohang Gyeongju).

**INTENTIONALLY**

**LEFT**

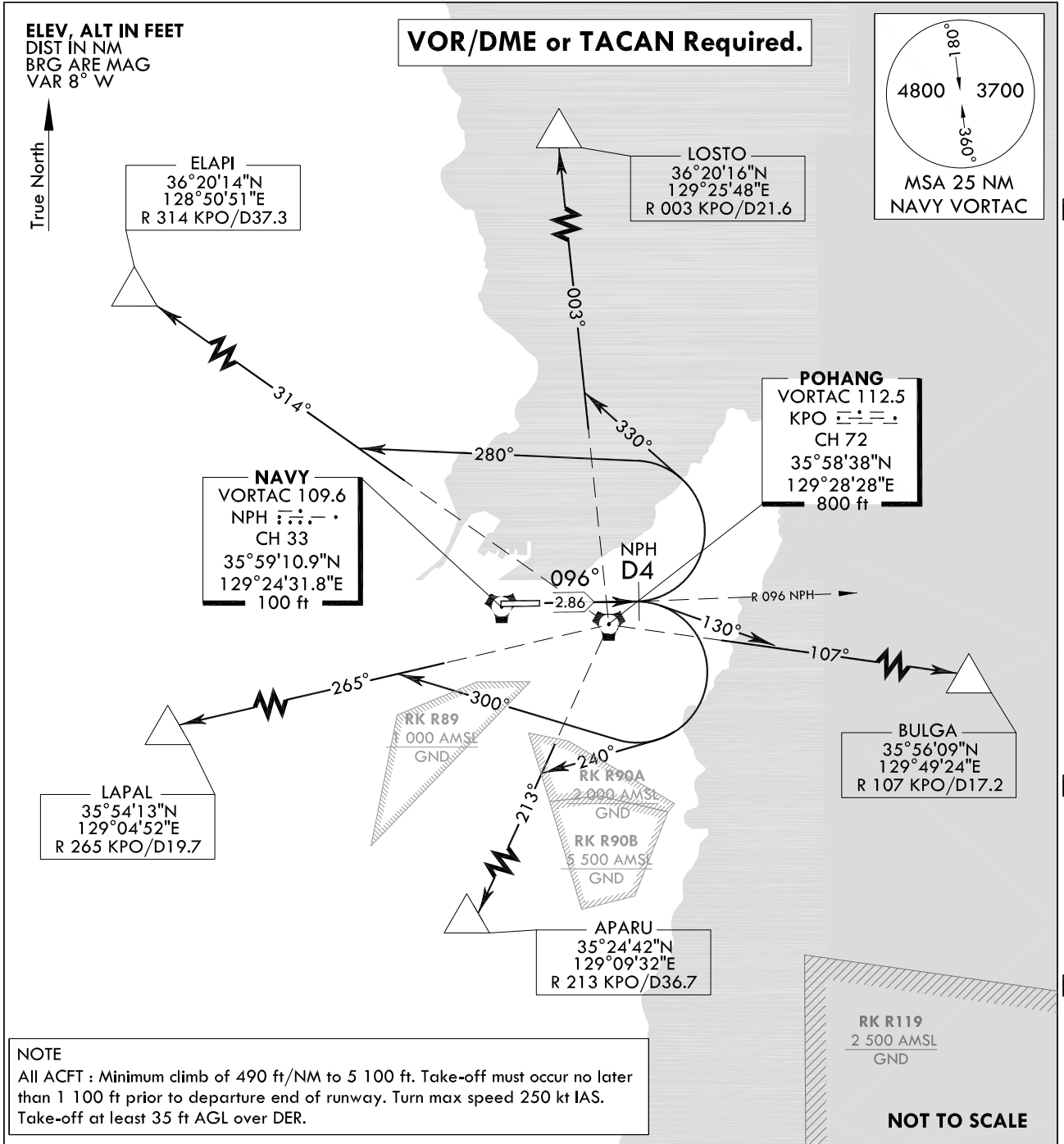
**BLANK**

**STANDARD DEPARTURE  
CHART - INSTRUMENT(SID)**

TRANSITION	ALT	14 000
TRANSITION	LVL	FL 140
POHANG DEP	120.2	124.25
		232.4
POHANG TWR	118.05	236.6
		308.5

**POHANG/Pohang Gyeongju(RKTH)**  
**RWY 10**  
**POHANG 5**

Note : Departure under U.S. TERPS.



**DEPARTURE ROUTE DESCRIPTION**

**POHANG 5 DEPARTURE**

TAKE-OFF RWY 10 : Climb on R 096 NPH to 4 DME, thence.....  
.....Climb to assigned or specified altitude via (the following transition routes).

The following transitions are ATC assigned only.

- ELAPI Transition** : Left turn HDG 280° to intercept R 314 KPO and R 314 KPO to ELAPI.
- LOSTO Transition** : Left turn HDG 330° to intercept R 003 KPO and R 003 KPO to LOSTO.
- BULGA Transition** : Right turn HDG 130° to intercept R 107 KPO and R 107 KPO to BULGA.
- APARU Transition** : Right turn HDG 240° to intercept R 213 KPO and R 213 KPO to APARU.
- LAPAL Transition** : Right turn HDG 300° to intercept R 265 KPO and R 265 KPO to LAPAL.

Change : Information of radial for LOSTO, BULGA and APARU.

**INTENTIONALLY**

**LEFT**

**BLANK**

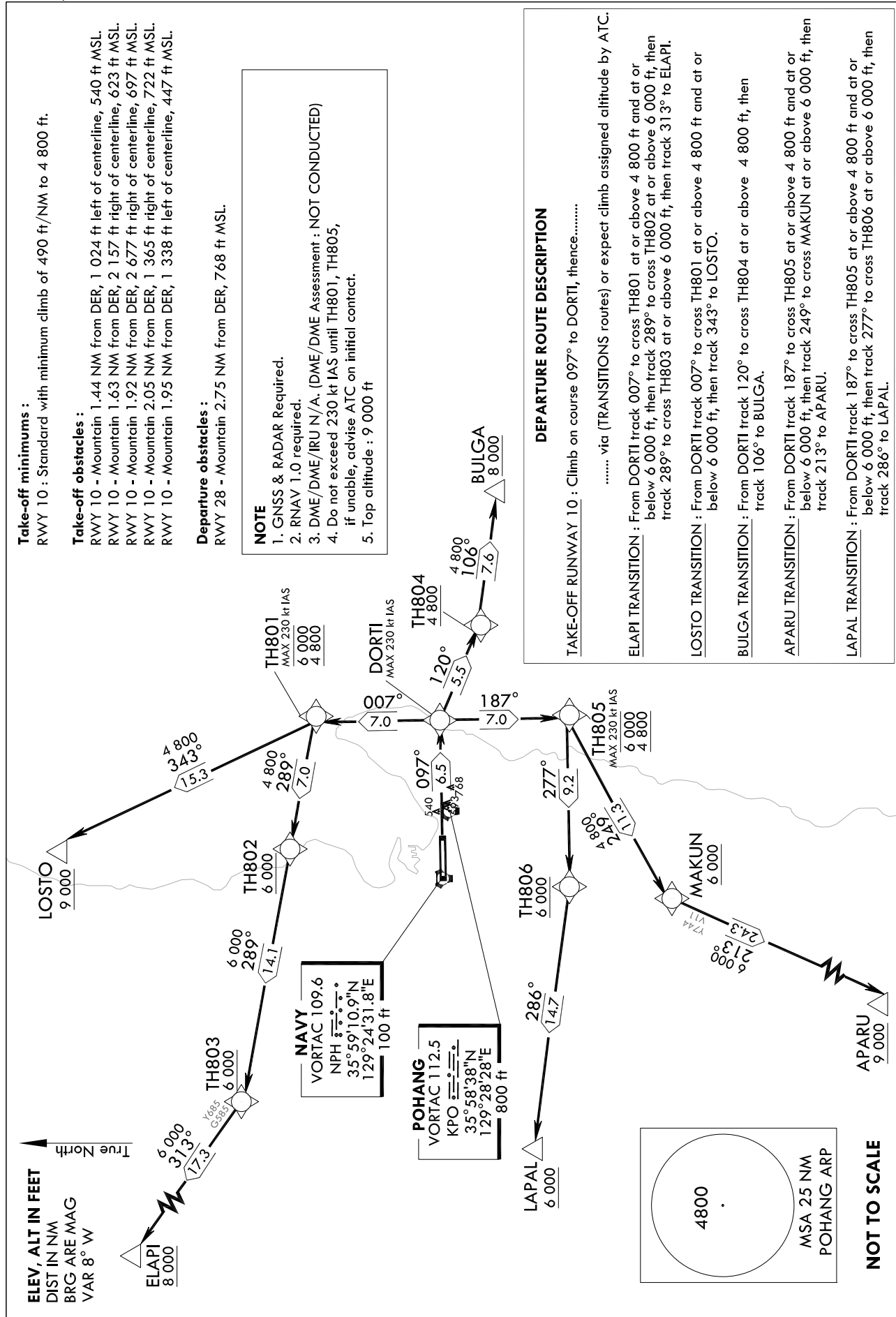
STANDARD DEPARTURE  
CHART-INSTRUMENT(SID)

TRANSITION ALT	14 000
TRANSITION LVL	FL 140

POHANG DEP	124.25	120.2
	232.4	
POHANG TWR	118.05	236.6
	308.50	

POHANG/Pohang Gyeongju(RKTH) |  
RNAV(GNSS) DORTI 1  
RWY 10

Note : Departure under U.S TERPS.



Change : Information of aerodrome name(Pohang → Pohang Gyeongju).

POHANG/Pohang Gyeongju(RKTH)  
RNAV(GNSS) DORTI 1  
RWY 10

AERONAUTICAL DATA TABULATION

Standard Instrument Departure Procedure Coding Tables

Serial Number	Path Descriptor	Waypoint Identifier	Fly-over	Course/Track °M(°T)	Distance (NM)	Turn direction	Altitude (ft)	Speed (kt)	Coordinates	VPA/TCH	Navigation specification	Remarks
RNAV DORTI 1 - ELAPI Transition												
001	CF	DORTI	-	097(089.3)	6.5	-	-	-230	35°59'21.9"N 129°33'56.6"E	-	RNAV 1	Bank Angle 23° CG 490 ft/NM to 4 800 ft
002	TF	TH801	-	007(359.3)	7.0	-	-6 000 +4 800	-230	36°06'22.7"N 129°33'50.5"E	-	RNAV 1	Bank Angle 23° CG 490 ft/NM to 4 800 ft
003	TF	TH802	-	289(280.8)	7.0	-	+6 000	-	36°07'41.0"N 129°25'21.0"E	-	RNAV 1	-
004	TF	TH803	-	289(280.7)	14.1	-	+6 000	-	36°10'16.4"N 129°08'17.0"E	-	RNAV 1	-
005	TF	ELAPI	-	313(305.3)	17.3	-	+8 000	-	36°20'14.1"N 128°50'50.9"E	-	RNAV 1	-

Serial Number	Path Descriptor	Waypoint Identifier	Fly-over	Course/Track °M(°T)	Distance (NM)	Turn direction	Altitude (ft)	Speed (kt)	Coordinates	VPA/TCH	Navigation specification	Remarks
RNAV DORTI 1 - LOSTO Transition												
001	CF	DORTI	-	097(089.3)	6.5	-	-	-230	35°59'21.9"N 129°33'56.6"E	-	RNAV 1	Bank Angle 23° CG 490 ft/NM to 4 800 ft
002	TF	TH801	-	007(359.3)	7.0	-	-6 000 +4 800	-230	36°06'22.7"N 129°33'50.5"E	-	RNAV 1	Bank Angle 23° CG 490 ft/NM to 4 800 ft
003	TF	LOSTO	-	343(334.9)	15.3	-	+9 000	-	36°20'15.8"N 129°25'48.3"E	-	RNAV 1	-

Serial Number	Path Descriptor	Waypoint Identifier	Fly-over	Course/Track °M(°T)	Distance (NM)	Turn direction	Altitude (ft)	Speed (kt)	Coordinates	VPA/TCH	Navigation specification	Remarks
RNAV DORTI 1 - BULGA Transition												
001	CF	DORTI	-	097(089.3)	6.5	-	-	-230	35°59'21.9"N 129°33'56.6"E	-	RNAV 1	Bank Angle 23° CG 490 ft/NM to 4 800 ft
002	TF	TH804	-	120(112.4)	5.5	-	+4 800	-	35°57'15.5"N 129°40'12.9"E	-	RNAV 1	CG 490 ft/NM to 4 800 ft
003	TF	BULGA	-	106(098.4)	7.6	-	+8 000	-	35°56'08.6"N 129°49'24.4"E	-	RNAV 1	-

Serial Number	Path Descriptor	Waypoint Identifier	Fly-over	Course/Track °M(°T)	Distance (NM)	Turn direction	Altitude (ft)	Speed (kt)	Coordinates	VPA/TCH	Navigation specification	Remarks
RNAV DORTI 1 - APARU Transition												
001	CF	DORTI	-	097(089.3)	6.5	-	-	-230	35°59'21.9"N 129°33'56.6"E	-	RNAV 1	Bank Angle 23° CG 490 ft/NM to 4 800 ft
002	TF	TH805	-	187(179.3)	7.0	-	-6 000 +4 800	-230	35°52'21.2"N 129°34'02.7"E	-	RNAV 1	Bank Angle 23° CG 490 ft/NM to 4 800 ft
003	TF	MAKUN	-	249(241.2)	11.3	-	+6 000	-	35°46'53.0"N 129°21'52.8"E	-	RNAV 1	-
004	TF	APARU	-	213(204.5)	24.3	-	+9 000	-	35°24'42.1"N 129°09'32.1"E	-	RNAV 1	-

Serial Number	Path Descriptor	Waypoint Identifier	Fly-over	Course/Track °M(°T)	Distance (NM)	Turn direction	Altitude (ft)	Speed (kt)	Coordinates	VPA/TCH	Navigation specification	Remarks
RNAV DORTI 1 - LAPAL Transition												
001	CF	DORTI	-	097(089.3)	6.5	-	-	-230	35°59'21.9"N 129°33'56.6"E	-	RNAV 1	Bank Angle 23° CG 490 ft/NM to 4 800 ft
002	TF	TH805	-	187(179.3)	7.0	-	-6 000 +4 800	-230	35°52'21.2"N 129°34'02.7"E	-	RNAV 1	Bank Angle 23° CG 490 ft/NM to 4 800 ft
003	TF	TH806	-	277(269.2)	9.2	-	+6 000	-	35°52'13.2"N 129°22'47.6"E	-	RNAV 1	-
004	TF	LAPAL	-	286(277.9)	14.7	-	+6 000	-	35°54'12.6"N 129°04'52.0"E	-	RNAV 1	-

Change : Information of aerodrome name(Pohang → Pohang Gyeongju).

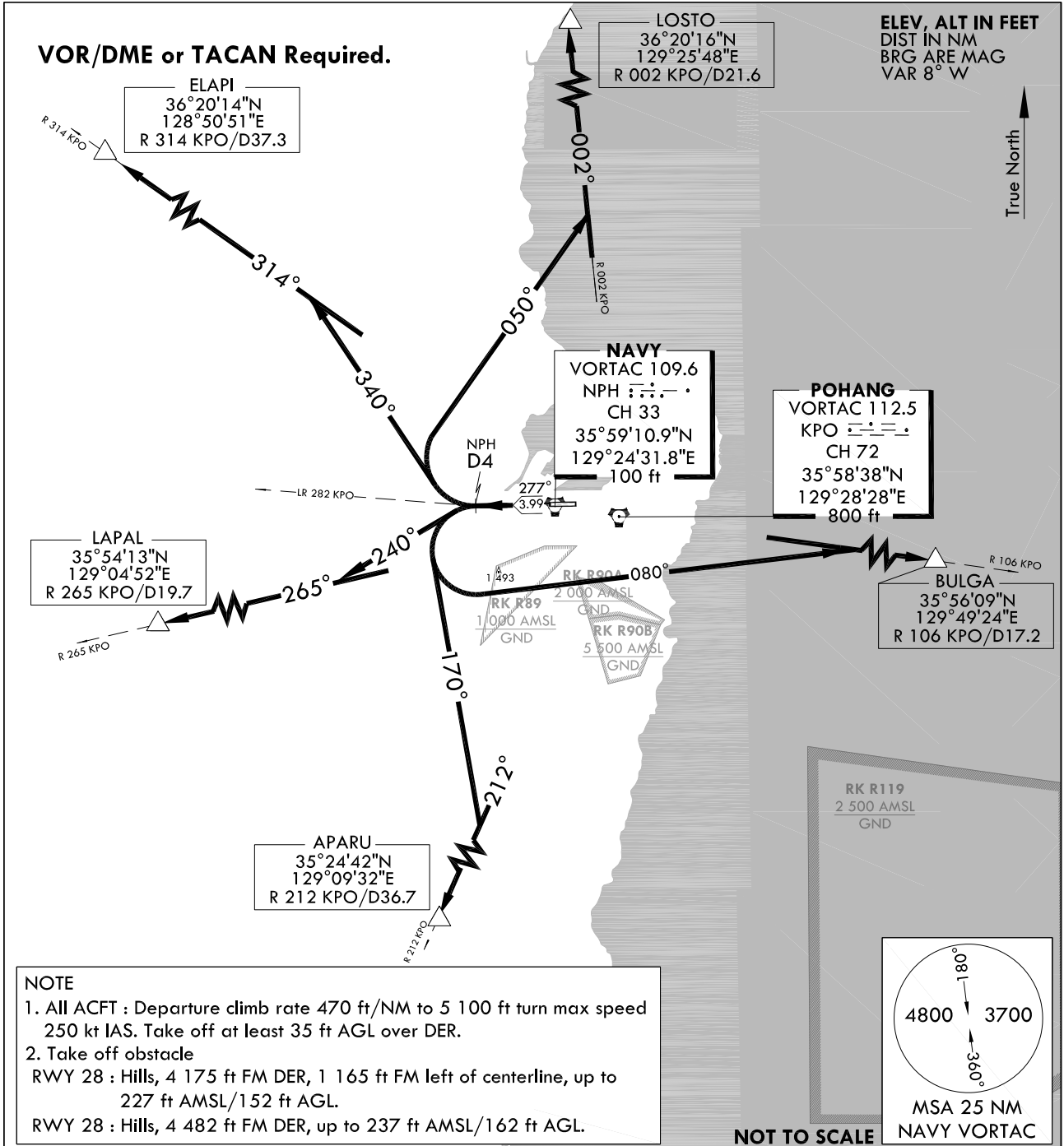
**STANDARD DEPARTURE  
CHART - INSTRUMENT(SID)**

TRANSITION ALT 14 000  
TRANSITION LVL FL 140

POHANG DEP 120.2 124.25  
232.4  
POHANG TWR 118.05 236.6  
308.5

**POHANG/Pohang Gyeongju(RKTH)**  
**RWY 28**  
**POHANG 4**

Note : Departure under U.S. TERPS.



**NOTE**  
 1. All ACFT : Departure climb rate 470 ft/NM to 5 100 ft turn max speed 250 kt IAS. Take off at least 35 ft AGL over DER.  
 2. Take off obstacle  
 RWY 28 : Hills, 4 175 ft FM DER, 1 165 ft FM left of centerline, up to 227 ft AMSL/152 ft AGL.  
 RWY 28 : Hills, 4 482 ft FM DER, up to 237 ft AMSL/162 ft AGL.

**DEPARTURE ROUTE DESCRIPTION**

**POHANG 4 DEPARTURE**

RWY 28 : Climb HDG 277° to NPH 4 DME or cross LR 282 KPO, then via assigned transition routes.

The following transitions are ATC assigned only : Fly to intercept for en route.

- ELAPI Transition** : .....right turn HDG 340° to intercept R 314 KPO and R 314 KPO to ELAPI.
- LOSTO Transition** : .....right turn HDG 050° to intercept R 002 KPO and R 002 KPO to LOSTO.
- BULGA Transition** : .....left turn HDG 080° to intercept R 106 KPO and R 106 KPO to BULGA.
- APARU Transition** : .....left turn HDG 170° to intercept R 212 KPO and R 212 KPO to APARU.
- LAPAL Transition** : .....left turn HDG 240° to intercept R 265 KPO and R 265 KPO to LAPAL.

Change : Information of aerodrome name(Pohang → Pohang Gyeongju).

**INTENTIONALLY**

**LEFT**

**BLANK**



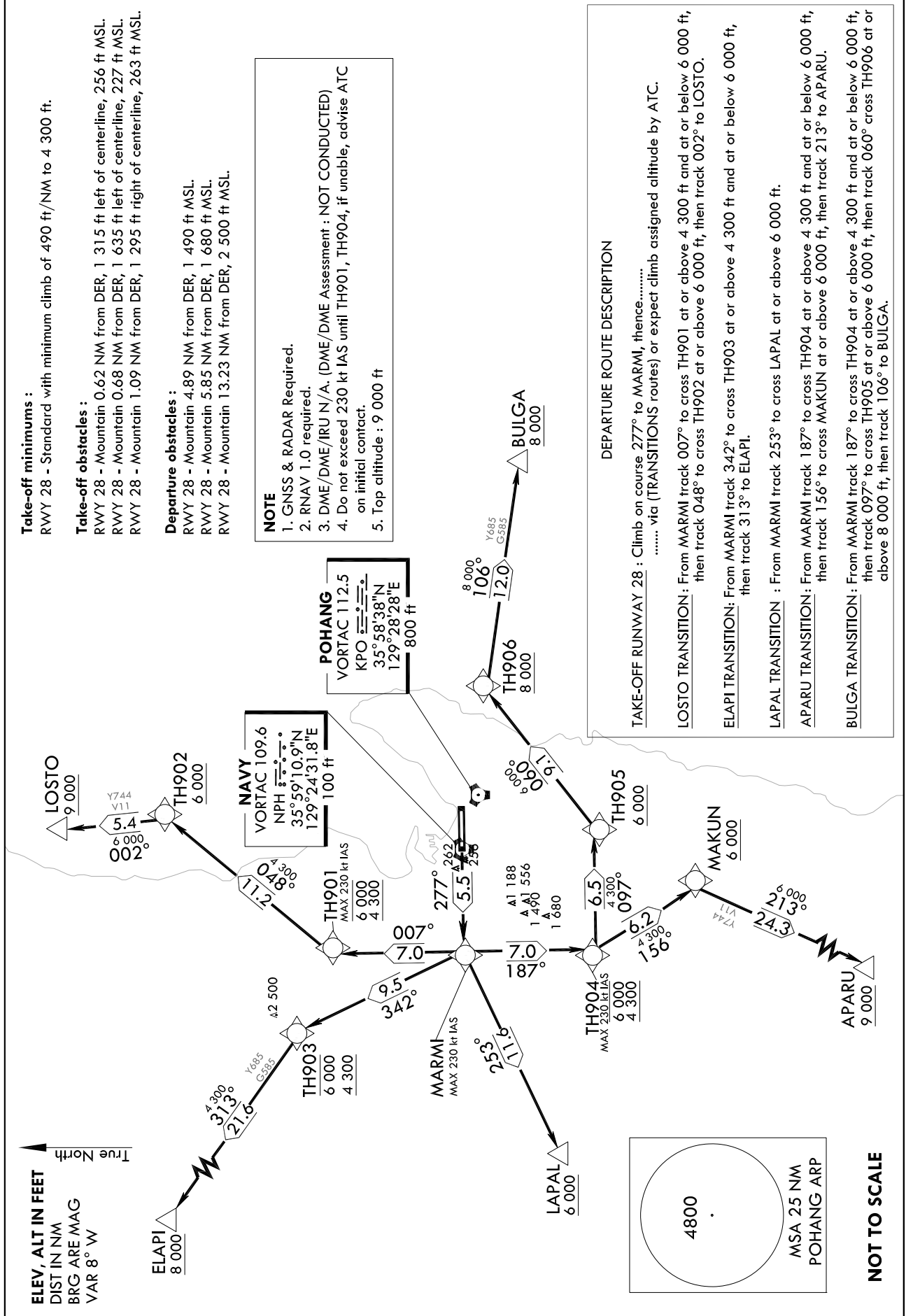
STANDARD DEPARTURE  
CHART-INSTRUMENT(SID)

TRANSITION	ALT	14 000
TRANSITION	LVL	FL 140

POHANG DEP	124.25	120.2
	232.4	
POHANG TWR	118.05	236.6
	308.50	

POHANG/Pohang Gyeongju(RKTH) |  
RNAV(GNSS) MARM 1  
RWY 28

Note : Departure under U.S TERPS.



Change : Information of aerodrome name(Pohang → Pohang Gyeongju).

AERONAUTICAL DATA TABULATION

Standard Instrument Departure Procedure Coding Tables

RNAV MARM1 1 - LOSTO Transition												
Serial Number	Path Descriptor	Waypoint Identifier	Fly-over	Course/Track °M(°T)	Distance (NM)	Turn direction	Altitude (ft)	Speed (kt)	Coordinates	VPA/TCH	Navigation specification	Remarks
001	CF	MARM1	-	277(269.2)	5.5	-	-	-230	35°59'11.5"N 129°17'44.0"E	-	RNAV 1	Bank Angle 23° CG 490 ft/NM to 4 300 ft
002	TF	TH901	-	007(359.2)	7.0	-	-6 000 +4 300	-230	36°06'12.2"N 129°17'36.5"E	-	RNAV 1	Bank Angle 23° CG 490 ft/NM to 4 300 ft
003	TF	TH902	-	048(039.7)	11.2	-	+6 000	-	36°14'50.3"N 129°26'28.6"E	-	RNAV 1	-
004	TF	LOSTO	-	002(354.3)	5.4	-	+9 000	-	36°20'15.8"N 129°25'48.3"E	-	RNAV 1	-
RNAV MARM1 1 - ELAPI Transition												
Serial Number	Path Descriptor	Waypoint Identifier	Fly-over	Course/Track °M(°T)	Distance (NM)	Turn direction	Altitude (ft)	Speed (kt)	Coordinates	VPA/TCH	Navigation specification	Remarks
001	CF	MARM1	-	277(269.2)	5.5	-	-	-230	35°59'11.5"N 129°17'44.0"E	-	RNAV 1	Bank Angle 23° CG 490 ft/NM to 4 300 ft
002	TF	TH903	-	342(334.3)	9.5	-	-6 000 +4 300	-	36°07'45.8"N 129°12'39.2"E	-	RNAV 1	CG 490 ft/NM to 4 300 ft
003	TF	ELAPI	-	313(305.3)	21.6	-	+8 000	-	36°20'14.1"N 128°50'50.9"E	-	RNAV 1	-
RNAV MARM1 1 - LAPAL Transition												
Serial Number	Path Descriptor	Waypoint Identifier	Fly-over	Course/Track °M(°T)	Distance (NM)	Turn direction	Altitude (ft)	Speed (kt)	Coordinates	VPA/TCH	Navigation specification	Remarks
001	CF	MARM1	-	277(269.2)	5.5	-	-	-230	35°59'11.5"N 129°17'44.0"E	-	RNAV 1	Bank Angle 23° CG 490 ft/NM to 4 300 ft
002	TF	LAPAL	-	253(244.6)	11.6	-	+6 000	-	35°54'12.6"N 129°04'52.0"E	-	RNAV 1	CG 490 ft/NM to 4 300 ft
RNAV MARM1 1 - APARU Transition												
Serial Number	Path Descriptor	Waypoint Identifier	Fly-over	Course/Track °M(°T)	Distance (NM)	Turn direction	Altitude (ft)	Speed (kt)	Coordinates	VPA/TCH	Navigation specification	Remarks
001	CF	MARM1	-	277(269.2)	5.5	-	-	-230	35°59'11.5"N 129°17'44.0"E	-	RNAV 1	Bank Angle 23° CG 490 ft/NM to 4 300 ft
002	TF	TH904	-	187(179.2)	7.0	-	-6 000 +4 300	-230	35°52'10.8"N 129°17'51.6"E	-	RNAV 1	Bank Angle 23° CG 490 ft/NM to 4 300 ft
003	TF	MAKUN	-	156(148.3)	6.2	-	+6 000	-	35°46'53.0"N 129°21'52.8"E	-	RNAV 1	-
004	TF	APARU	-	213(204.5)	24.3	-	+9 000	-	35°24'42.1"N 129°09'32.1"E	-	RNAV 1	-
RNAV MARM1 1 - BULGA Transition												
Serial Number	Path Descriptor	Waypoint Identifier	Fly-over	Course/Track °M(°T)	Distance (NM)	Turn direction	Altitude (ft)	Speed (kt)	Coordinates	VPA/TCH	Navigation specification	Remarks
001	CF	MARM1	-	277(269.2)	5.5	-	-	-230	35°59'11.5"N 129°17'44.0"E	-	RNAV 1	Bank Angle 23° CG 490 ft/NM to 4 300 ft
002	TF	TH904	-	187(179.2)	7.0	-	-6 000 +4 300	-230	35°52'10.8"N 129°17'51.6"E	-	RNAV 1	Bank Angle 23° CG 490 ft/NM to 4 300 ft
003	TF	TH905	-	097(089.2)	6.5	-	+6 000	-	35°52'16.2"N 129°25'51.6"E	-	RNAV 1	-
004	TF	TH906	-	060(052.0)	9.1	-	+8 000	-	35°57'53.7"N 129°34'43.8"E	-	RNAV 1	-
005	TF	BULGA	-	106(098.3)	12.0	-	+8 000	-	35°56'08.6"N 129°49'24.4"E	-	RNAV 1	-

Change : Information of aerodrome name(Pohang → Pohang Gyeongju).